

Survey for C. & J. B. Dana Dec. 22-1891.

280
228.7
51.3

83.
51.3
228.7
363.

17.14
2.28
14.86

414.8
95.7
510.5

511.1
10.4
500.7

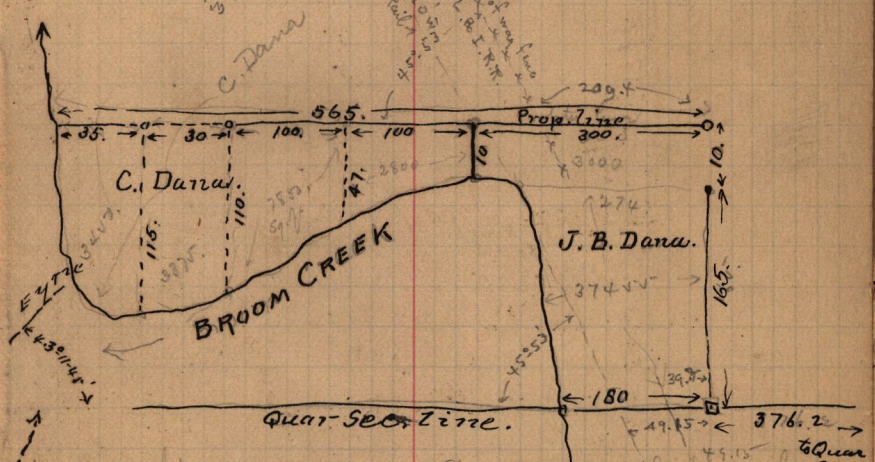
493.1
17.1
319.2

14.86
486
976

10.40416

10458
163
1464
2928
488
7954.4

See Plat Book
page 62



a right way for wagons E. & W. across the north
part of the block
C. Dana & Nellie Dana his wife
J. B. Dana

(See Field Book K p. 80-81)